



West View Primary School
Passionate Learners, Confident Leaders

维新小学
维护传统 勇于创新

Attendance Taking: <https://go.gov.sg/attendance-for-p1-admin-day>





West View Primary School
Passionate Learners, Confident Leaders

维新小学
维护传统 勇于创新

P1 Administration Day

21 November 2025 (Friday)
11.30am to 12.30pm



2026 P1 Administration Day

Links to all documents/forms



West View Primary School
Passionate Learners, Confident Leaders

Official (Closed)/Sensitive (Normal)

School Leaders and Administration & Operations Staff



Mdm Siti Suhaila Bte Sapihe
(Vice Principal)



Mr Lee Fook Loong Eugene
(Principal)



Ms Ong Poh Choo Doris
(Vice Principal (Administration))



Ms Soo Bee Li
(Year Head (LP))



Ms Khoo Poh Ling
(Administration Manager)



Mdm Tng Yew Li
(Operations Manager)



Mdm Yeo Choon Keow
(Operations Manager)



Mdm Nur Amalina Bte Sukimin
(ICT Manager)



Mr Lok Kin Fook
(ICT Manager)



Mdm Faten Hanani Bte Harun
(Administrative Executive)



Ms Nurasyirin Bte Mohamad
(Administrative Executive)



Mdm Koh Sok Joo
(Corporate Support Officer)



Mdm Lai Siew Lan Christina
(Corporate Support Officer)

Agenda

- Introduction to School Leaders and School Administration & Operations Staff
- Principal's Address
- Administration and Operations Matters
 - School Operations
 - Purchase of Textbooks and Uniform
 - Application for Bus Transport, Digital Device, Student Care Centre
- Financial Matters
 - Application for eGIRO & Edusave Standing Order
 - Application for MOE-FAS or School-based FAS
- Safety Related Matters
 - Student Detail Form & Health Declaration
 - Health Related Matters
 - School Road Safety Matters
- Central Kitchen Meal Model

PRINCIPAL'S ADDRESS

Mr Lee Fook Loong Eugene



West View Primary School
Passionate Learners, Confident Leaders

Official (Closed)/Sensitive (Normal)

School Operations Matters

Ms Soo Bee Li, Year Head (Lower Primary)



West View Primary School
Passionate Learners, Confident Leaders

Official (Closed)/Sensitive (Normal)

Primary 1 School Hours



Date	Activity	Timing
2 January (Friday)	P1 Orientation Day	8.30 am to 12.30 pm
Week 1 5 to 9 January	P1 Start-it-Right	7.30 am to 12.30 pm
12 January onwards	Normal School Hours	7.30 am to 1.30 pm



West View Primary School
Passionate Learners, Confident Leaders

Official (Closed)/Sensitive (Normal)

Primary 1 Typical Timetable



Timing	Activity
7.20 am to 7.30 am	Flag-raising and Tone-setting
7.30 am to 9.00 am	Lessons
9.00 am to 9.30 am	Recess
9.30 am to 11.55 am	Lessons
11.55 am to 12.05 pm	Snack break
12.05 pm to 1.25 pm	Lessons
1.30 pm	Dismissal



West View Primary School
Passionate Learners, Confident Leaders

Official (Closed)/Sensitive (Normal)

Subjects Offered in Primary 1

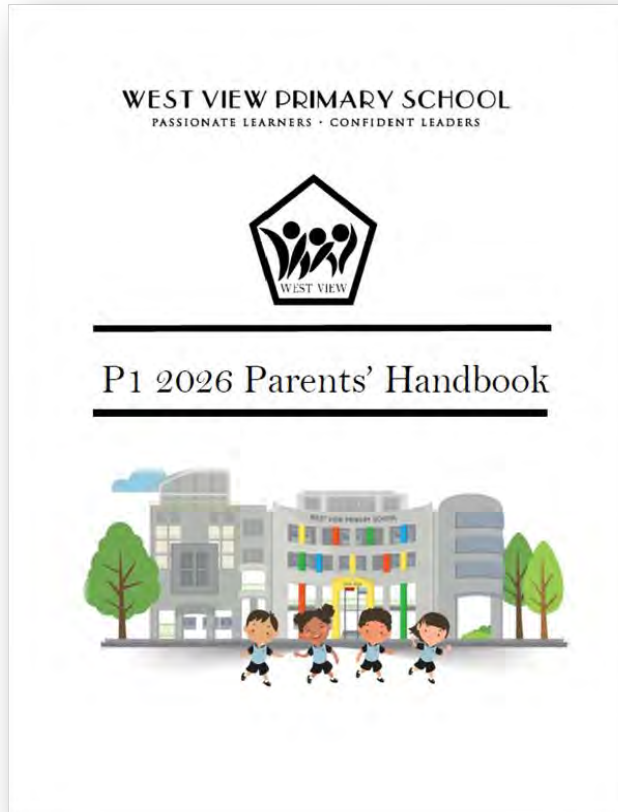
- English Language (EL)
- Mathematics (MA)
- Mother Tongue Languages (Chinese, Malay, Tamil, Hindi)
- Form Teacher Guidance Period (FTGP)
- Character and Citizenship Education (CCE)
- Programme for Active Learning (PAL)
- Curriculum-based Learning Programme (CLP)
- Social Studies (SS)
- Physical Education (PE)
- Art and Craft (AC)
- Music (MU)



West View Primary School
Passionate Learners, Confident Leaders



P1 Parents Resources



RE: P1 Orientation 2026



Soo BEE LI (SCHOOLS)
To: Koh SOK JOO (SCHOOLS)
Cc: Poh Choo ONG (SCHOOLS); Khoo Poh Ling (SCHOOLS)

Reply Reply All Forward

Mon 17/11/2025 2:05 PM

RESTRICTED/NON-SENSITIVE

Dear Parents/Guardians,

We would like to extend a very warm welcome to you and your child to our school. As your child enters a new phase in his/her schooling experience, we look forward to partner you to provide the best educational experience for him/her.

- Your child will be in **1 Aspiration**.
- We have prepared the following resources comprising important information and instructions to orientate you and your child. Please complete the following before the first day of school.
 - Download the P1 Parents' Handbook attached to this email.
 - View '[Welcome and Introduction of School Personnel](#)'
 - View '[School Operations](#)'
 - View '[Preparing for School](#)'
 - View '[A Day in the Life of a Primary 1 Pupil](#)'
- Our school will be having the P1 Day 1 with you and your child on **Friday, 2 January 2026 at 8.30 am**. On that day, we have planned the following:

Resources for parents

Education and Career
Guidance (ECG) Resources

Resources for parents

Resources for pupils

- [2026 P1 Administration Day](#)
- [Central Kitchen Meal Model](#)
- [Group Personal Accident Insurance for students](#)
- [A Day in Life of a P1 Pupil](#)
- [P1 Orientation 2025](#)

Name of Pupil	Class	Textbooks/Workbooks	Author	Subj.	Price	& Total
English Language		English Language P1 Student Book 1 (2026)	Macmillan	English	14.00	
		English Language P1 Student Book 2 (2026)	Macmillan	English	14.00	
		English Language P1 Student Book 3 (2026)	Macmillan	English	14.00	
		English Language P1 Student Book 4 (2026)	Macmillan	English	14.00	
		English Language P1 Student Book 5 (2026)	Macmillan	English	14.00	
		English Language P1 Student Book 6 (2026)	Macmillan	English	14.00	
		English Language P1 Student Book 7 (2026)	Macmillan	English	14.00	
		English Language P1 Student Book 8 (2026)	Macmillan	English	14.00	
		English Language P1 Student Book 9 (2026)	Macmillan	English	14.00	
		English Language P1 Student Book 10 (2026)	Macmillan	English	14.00	
		English Language P1 Student Book 11 (2026)	Macmillan	English	14.00	
		English Language P1 Student Book 12 (2026)	Macmillan	English	14.00	
		English Language P1 Student Book 13 (2026)	Macmillan	English	14.00	
		English Language P1 Student Book 14 (2026)	Macmillan	English	14.00	
		English Language P1 Student Book 15 (2026)	Macmillan	English	14.00	
		English Language P1 Student Book 16 (2026)	Macmillan	English	14.00	
		English Language P1 Student Book 17 (2026)	Macmillan	English	14.00	
		English Language P1 Student Book 18 (2026)	Macmillan	English	14.00	
		English Language P1 Student Book 19 (2026)	Macmillan	English	14.00	
		English Language P1 Student Book 20 (2026)	Macmillan	English	14.00	
		English Language P1 Student Book 21 (2026)	Macmillan	English	14.00	
		English Language P1 Student Book 22 (2026)	Macmillan	English	14.00	
		English Language P1 Student Book 23 (2026)	Macmillan	English	14.00	
		English Language P1 Student Book 24 (2026)	Macmillan	English	14.00	
		English Language P1 Student Book 25 (2026)	Macmillan	English	14.00	
		English Language P1 Student Book 26 (2026)	Macmillan	English	14.00	
		English Language P1 Student Book 27 (2026)	Macmillan	English	14.00	
		English Language P1 Student Book 28 (2026)	Macmillan	English	14.00	
		English Language P1 Student Book 29 (2026)	Macmillan	English	14.00	
		English Language P1 Student Book 30 (2026)	Macmillan	English	14.00	
		English Language P1 Student Book 31 (2026)	Macmillan	English	14.00	
		English Language P1 Student Book 32 (2026)	Macmillan	English	14.00	
		English Language P1 Student Book 33 (2026)	Macmillan	English	14.00	
		English Language P1 Student Book 34 (2026)	Macmillan	English	14.00	
		English Language P1 Student Book 35 (2026)	Macmillan	English	14.00	
		English Language P1 Student Book 36 (2026)	Macmillan	English	14.00	
		English Language P1 Student Book 37 (2026)	Macmillan	English	14.00	
		English Language P1 Student Book 38 (2026)	Macmillan	English	14.00	
		English Language P1 Student Book 39 (2026)	Macmillan	English	14.00	
		English Language P1 Student Book 40 (2026)	Macmillan	English	14.00	
		English Language P1 Student Book 41 (2026)	Macmillan	English	14.00	
		English Language P1 Student Book 42 (2026)	Macmillan	English	14.00	
		English Language P1 Student Book 43 (2026)	Macmillan	English	14.00	
		English Language P1 Student Book 44 (2026)	Macmillan	English	14.00	
		English Language P1 Student Book 45 (2026)	Macmillan	English	14.00	
		English Language P1 Student Book 46 (2026)	Macmillan	English	14.00	
		English Language P1 Student Book 47 (2026)	Macmillan	English	14.00	
		English Language P1 Student Book 48 (2026)	Macmillan	English	14.00	
		English Language P1 Student Book 49 (2026)	Macmillan	English	14.00	
		English Language P1 Student Book 50 (2026)	Macmillan	English	14.00	
		English Language P1 Student Book 51 (2026)	Macmillan	English	14.00	
		English Language P1 Student Book 52 (2026)	Macmillan	English	14.00	
		English Language P1 Student Book 53 (2026)	Macmillan	English	14.00	
		English Language P1 Student Book 54 (2026)	Macmillan	English	14.00	
		English Language P1 Student Book 55 (2026)	Macmillan	English	14.00	
		English Language P1 Student Book 56 (2026)	Macmillan	English	14.00	
		English Language P1 Student Book 57 (2026)	Macmillan	English	14.00	
		English Language P1 Student Book 58 (2026)	Macmillan	English	14.00	
		English Language P1 Student Book 59 (2026)	Macmillan	English	14.00	
		English Language P1 Student Book 60 (2026)	Macmillan	English	14.00	
		English Language P1 Student Book 61 (2026)	Macmillan	English	14.00	
		English Language P1 Student Book 62 (2026)	Macmillan	English	14.00	
		English Language P1 Student Book 63 (2026)	Macmillan	English	14.00	
		English Language P1 Student Book 64 (2026)	Macmillan	English	14.00	
		English Language P1 Student Book 65 (2026)	Macmillan	English	14.00	
		English Language P1 Student Book 66 (2026)	Macmillan	English	14.00	
		English Language P1 Student Book 67 (2026)	Macmillan	English	14.00	
		English Language P1 Student Book 68 (2026)	Macmillan	English	14.00	
		English Language P1 Student Book 69 (2026)	Macmillan	English	14.00	
		English Language P1 Student Book 70 (2026)	Macmillan	English	14.00	
		English Language P1 Student Book 71 (2026)	Macmillan	English	14.00	
		English Language P1 Student Book 72 (2026)	Macmillan	English	14.00	
		English Language P1 Student Book 73 (2026)	Macmillan	English	14.00	
		English Language P1 Student Book 74 (2026)	Macmillan	English	14.00	
		English Language P1 Student Book 75 (2026)	Macmillan	English	14.00	
		English Language P1 Student Book 76 (2026)	Macmillan	English	14.00	
		English Language P1 Student Book 77 (2026)	Macmillan	English	14.00	
		English Language P1 Student Book 78 (2026)	Macmillan	English	14.00	
		English Language P1 Student Book 79 (2026)	Macmillan	English	14.00	
		English Language P1 Student Book 80 (2026)	Macmillan	English	14.00	
		English Language P1 Student Book 81 (2026)	Macmillan	English	14.00	
		English Language P1 Student Book 82 (2026)	Macmillan	English	14.00	
		English Language P1 Student Book 83 (2026)	Macmillan	English	14.00	
		English Language P1 Student Book 84 (2026)	Macmillan	English	14.00	
		English Language P1 Student Book 85 (2026)	Macmillan	English	14.00	
		English Language P1 Student Book 86 (2026)	Macmillan	English	14.00	
		English Language P1 Student Book 87 (2026)	Macmillan	English	14.00	
		English Language P1 Student Book 88 (2026)	Macmillan	English	14.00	
		English Language P1 Student Book 89 (2026)	Macmillan	English	14.00	
		English Language P1 Student Book 90 (2026)	Macmillan	English	14.00	
		English Language P1 Student Book 91 (2026)	Macmillan	English	14.00	
		English Language P1 Student Book 92 (2026)	Macmillan	English	14.00	
		English Language P1 Student Book 93 (2026)	Macmillan	English	14.00	
		English Language P1 Student Book 94 (2026)	Macmillan	English	14.00	
		English Language P1 Student Book 95 (2026)	Macmillan	English	14.00	
		English Language P1 Student Book 96 (2026)	Macmillan	English	14.00	
		English Language P1 Student Book 97 (2026)	Macmillan	English	14.00	
		English Language P1 Student Book 98 (2026)	Macmillan	English	14.00	
		English Language P1 Student Book 99 (2026)	Macmillan	English	14.00	
		English Language P1 Student Book 100 (2026)	Macmillan	English	14.00	

P1 Investiture

26 January
2026
(Monday)
12.30 to
1.30 pm



West View Primary School
Passionate Learners, Confident Leaders

Official (Closed)/Sensitive (Normal)

School Administration Matters

Ms Khoo Poh Ling, Administration Manager



West View Primary School
Passionate Learners, Confident Leaders

Official (Closed)/Sensitive (Normal)

Collecting Pupil Data via Student Details Form (SDF) Portal

- Please submit the information via **online Student Details Form (SDF) portal** from **1 Dec 2025, 10.00am**.
- Select under the Services page on Parents Gateway (PG) mobile app or the QR code below.
- We seek your help to complete the submission **by 31 Dec 2025**.



P1 Textbooks and Uniform

➤ Online Order and Home delivery

- Purchase online at www.pacificbookstores.com.
- Delivery charge of \$14.90 applies.

➤ Self-Collection (Online Order) and Walk-In Purchases

- Opening Hours: 9am to 3pm
- Avoid lunch time: 12pm to 1pm

➤ Payment Mode

- Online: VISA, MASTERCARD, Debit Cards, & PayNow
- Walk-in: Cash, Paynow, & NTUC CARE FUND (E-VOUCHER)





P1 Textbooks and Uniform

Walk-In Purchases: Opening Schedule

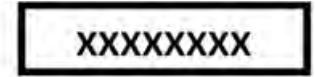
27/11/2025	Thursday	Self-Collection for Online, Walk-In Purchase for P1 Only	9am to 3pm
09/12/2025	Tuesday	Self-Collection for Online, Walk-In Purchase for All Levels	
10/12/2025	Wednesday	Self-Collection for Online, Walk-In Purchase for All Levels	
11/12/2025	Thursday	Self-Collection for Online, Walk-In Purchase for All Levels	
15/12/2025	Monday	FAS Collection, Walk-In Purchase for FAS Only	
16/12/2025	Tuesday	FAS Collection, Walk-In Purchase for FAS Only	
17/12/2025	Wednesday	FAS Collection, Walk-In Purchase for FAS Only	
23/12/2025	Tuesday	Self-Collection for Online, Walk-In Purchase for All Levels	
26/12/2025	Friday	Self-Collection for Online, Walk-In Purchase for All Levels	
29/12/2025	Monday	Self-Collection for Online, Walk-In Purchase for All Levels	

Avoid lunch time: 12pm to 1pm

School Uniform



Name tag



Cost of Name Tags:
6 for \$6.60

Cost of uniform:

- Polo Shirt: \$8.00 to \$9.00
- Shorts: \$7.00 to \$8.00
- Culottes: \$9.00 to \$10.00
- Black Shoes: \$19.90

Cost of Shoes and Socks:

- Black Shoes (Lace): \$19.90
- Black Shoes (Velcro): \$17.90
- Socks: \$2.20

Application for Bus Transport

➤ Bus Transport Vendor: JK59



School Bus

The bus fares listed below are for daily school bus services by distance and the maximum fares for each distance cap. Actual bus fares based on other commercial considerations such as the distance, route, number of students on buses and the size of school bus etc.

Operator: JK59 Transport Pte Ltd

Telephone: 64655959

Distance	Up to 15 Seaters		>15 - 30 seaters		>30 seaters	
	1 way	2 way	1 way	2 way	1 way	2 way
Up to 2km	\$115.00	\$120.00	\$115.00	\$120.00	\$115.00	\$120.00
>2Km - 4Km	\$220.00	\$225.00	\$220.00	\$225.00	\$220.00	\$225.00

Application for Digital Device

- Pupils will have regular online assignments on Student Learning Space (SLS) and other approved platforms.
- Please provide a digital device for home learning, such as:
 - ✓ A tablet with keyboard / laptop/ computer, and
 - ✓ Stable Internet connection.



<https://go.gov.sg/digitalaccessathomescheme>

Support for Families

- Lower-income households can apply for the DigitalAccess@Home Scheme to purchase a device at subsidised rates.



Scan the QR code to find out more.

School Administration Matters

Mdm Faten Hanani Bte Harun, Administrative Executive



West View Primary School
Passionate Learners, Confident Leaders

Official (Closed)/Sensitive (Normal)

JOIN US AT BIG HEART!

Our Programme Highlights:

- Affordable After-school Care
- Homework Supervision
- Meals Provided
- Holistic Learning Programme
- Values & Character Development
- Enrichment and Life Skills
- Health, Sports & Aesthetics
- Holiday Enrichment Programmes



Learn virtues and values through games



Explore the world through S.T.E.M. It Up!

Keeping fit with Health & Fitness



Express your creativity in various ways



Develop an interest & love for reading



Keep up to date on today's current affairs

Strong support and partnership with MOE, school, parents, Self Help Groups and the community

Big Heart Student Care is managed by Self Help Groups Student Care Limited, a joint venture by:



SIDA
Singapore Indian Development Association



MENDAKI

Application for Student Care Centre



Parent Expresses Interest



Scan the QR Code to fill
in the E-Interest Form



SCC Receives E-Interest Form

Centre reviews and forwards to
school for approval



School Approval

Application is reviewed and
approved by the school





Document Submission & Payment

Parent to bring all required documents.
Make the necessary payment during
the appointment

Application for Student Care Centre

**SCAN
HERE TO
LEARN
MORE
ABOUT US!**



 **BIG HEART**
STUDENT CARE

Inspiring Minds • Touching Hearts

[Website](#)

[Interest to Register](#)

[e-Brochure](#)

[Corporate Video](#)

School Finance Matters

Mdm Faten Hanani Bte Harun, Administrative Executive



West View Primary School
Passionate Learners, Confident Leaders

Official (Closed)/Sensitive (Normal)

Application for eGIRO



- Cashless convenience for parents (Enrichment Programmes or Reimbursement)
- We strongly encourage all parents to set up eGiro for easy and hassle-free payments
- Singaporean, PR, and International Student can apply via QR Code below

[Apply for eGIRO | MOE](#)

Refer to User Guide: [moeegirouserguide.pdf](#)



<https://go.gov.sg/setup-moe-egiro>

Acceptable bank accounts

Account holders from the following banks can sign up for the GIRO scheme with MOE through this page:



Submission of Edusave Standing Order

- Parents whose child is a Singapore Citizen are strongly encouraged to opt in for Edusave Standing Order
 - All school fees and enrichment programs will be automatically deducted from the child's Edusave account
 - This ensures convenient and timely payments with no manual processing required

- Apply via:
 - [Standing Order for Use of Edusave Account At Govt / Govt-Aided School \(wef June 2025\) | FormSG](#)

MOE-FAS and School-based FAS

- A briefing on MOE-FAS and School-Based FAS will be held on 3 December 2025 (Wednesday), at 1.30pm.
- Please register your interest to attend the briefing at the Administration Booth after the session.
- Parents are encouraged to submit an online application using this link: <https://go.gov.sg/moe-efasggas>



Student Health Matters

Ms Ong Poh Choo Doris, Vice Principal (Administration)



West View Primary School
Passionate Learners, Confident Leaders

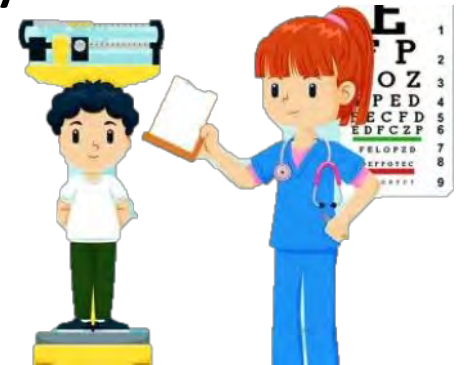
Official (Closed)/Sensitive (Normal)

School Health Services

- Annual Health Check (P1 to P6)
 - All P1 to P6 students will undergo the **annual health check** conducted by Health Promotion Board
 - For 2026, it is tentatively scheduled from 23 February to 3 March.

- Reminder to parents:
 - The school will collect your child's Health Booklet prior to the annual health check
 - Notification for collection will be sent via Parent Gateway

- Refer to this link for more information:
[Health Screening for Primary School](#)



School Dental Services

- West View Primary School Dental Clinic
 - Services Provided:
 - Regular dental checks for students
 - Basic dental treatments and oral health education
- Dental clinic will be open in the school from Jan to Jun annually
- Buddy Dental Clinics
 - Greenridge Primary School
 - Bukit Panjang Primary School
- Contact numbers for the dental clinics:
<https://www.westviewpri.moe.edu.sg/wvps/services/>



School Dental Services

(A) For any dental enquiries, please contact the following:

First point of contact:	8798 5043 WhatsApp messages are preferred, as our staff may be occupied with providing treatment for patients. If it is urgent, please call.
General enquiry, please email:	Cheong_Wai_Leong@hpb.gov.sg

(B) Information on urgent dental needs and buddy dental clinics as a supporting role:

Urgent dental conditions:	<ul style="list-style-type: none">• Fever due to toothache• Facial swelling• Injury to mouth and teeth	
Buddy Dental Clinic (supporting role)	Contact Number	
Greenridge Primary School	9839 6594	WhatsApp messages are preferred, as our staff may be occupied with providing treatment for patients. If it is urgent, please call.
Bukit Panjang Primary School	9114 2186	
Mobile Dental Clinic 25 (located in a Secondary School)	9186 4597	

School Road Safety Matters

Ms Ong Poh Choo Doris, Vice Principal (Administration)



West View Primary School
Passionate Learners, Confident Leaders

Official (Closed)/Sensitive (Normal)

Vehicle Pick-Up and Drop-off



Vehicle Pick-Up and Drop-off



Gate C1 will remain closed, at all times. Open for exiting vehicle by sensor.



Gate B will remain closed except for the following timings (*Note: 1.15pm to 1.45pm - closed for primary school dismissal*):

- 6.30am to 8.30am
- 11.45am to 12.15pm (For MK students's dismissal)
- 1.45pm to 2.30pm (For Pri Sch student's dismissal)
- 4.30pm to 6.00pm (For KCare and MK student's dismissal)

Walking-In



Gate C2 will remain closed except for the following timings:

- 6.30am to 7.25am (Arrival)
- 1.30pm to 2.00pm (Dismissal)

Gate A will remain closed except for the following timings:

- 6.30am to 8.30am
- 11.45am to 12.15pm (For MK students's dismissal)
- 1.30pm to 2.30pm (For Pri Sch student's dismissal)
- 4.30pm to 6.00pm (For KCare and MK student's dismissal)

For Noting

➤ **Vehicular Drop-off and Pick-up**

- Ensure your child is ready to exit the vehicle quickly, with their bags in hand
- Parents/Caregivers must remain inside the vehicle at all times
- Teachers will be on-site to assist younger children with alighting
- Please move off promptly after your child has exited to avoid traffic congestion

➤ **Pedestrian Movement In and Out of the School**

- Use Gate A or Gate C2 according to the designated entry/exit timings
- Parents/Caregivers are not allowed beyond the Security Guard Post, unless during dismissal to pick up at the foyer
- Encourage your child to enter the school premises independently

Brief on Central Kitchen Meal Model

Ms Ong Poh Choo Doris, Vice Principal (Administration)



EXCITING NEWS!

**Our Canteen is Getting a
MAJOR Upgrade!**

**Central Kitchen Meal Model (CKMM) @
WEST VIEW PRIMARY SCHOOL**



Why This Change?

Students often face long waiting times in queues before receiving their food.



Why This Change?

There are limited food choices.



Fewer people are willing to run canteen stalls, leaving many stalls vacant for extended periods.



Why This Change?

Rising ingredient costs versus the need to keep prices affordable.



THE STRAITS TIMES

Pre-packed meals, dispensers: Canteen vendor shortage drives S'pore schools to serve up alternatives



Singapore

Amid shortage of canteen stallholders, schools turn to catering and vending machines

Higher costs, school closures during holidays and limited operating hours have made it tough for canteen vendors to maintain a steady income.

Student meals are prepared in Sats' kits!



Elisha Tushara
Correspondent

UPDATED APR 29, 2024, 12:01 PM



Students buy food from canteen stallholder Khoo Lian Geok, who sells noodles at Methodist Girls' School. (Photo: CNA/Rebecca Metteo)



Rebecca Metteo



Darrelle Ng

06 Sep 2024 06:56PM
(Updated: 09 Sep 2024 05:00 AM)



Currently, the re

UPDATED OCT 07:

THE STRAITS TIMES

FOR SUBSCRIBERS

There's a food crisis silently brewing in schools in Singapore

With canteen operators struggling, vending machines and food deliveries are replacing fresh meals. This raises serious concerns about the long-term health of students.

Teo Yik Ying



THE STRAITS TIMES

Forum: Time for centralised system to replace stallholders at school canteens

UPDATED OCT 09, 2024, 05:00 AM

It would be a good change if Mr Teo Yik Ying's proposal of centralised cooking for all school canteens were implemented (There's a food crisis silently brewing in schools in Singapore, Oct 7).

School canteens are in a fluid situation now. Some schools use vending machines for their food, some engage external caterers while the rest are still relying on individual stallholders.

The Education Ministry should help transit this discretionary method to the centralised system Mr Teo proposed.

I was the operations manager in a primary school from 2000 to 2016 and would like to suggest it is time for individual stallholders to leave the scene.

**Our school is one of the 13 schools
participating in MOE's pilot on the
Central Kitchen Meal Model**



About the pilot:



Project with
Ministry of
Education and
13 schools



Involves
central
kitchens



Starts in
2026



What is a central kitchen?

- ✱ Commercial kitchen facility
- ✱ Equipped to prepare and produce food in **large quantities**
- ✱ One central kitchen can prepare food for **multiple locations**



Soba-making machine
at RE&S central kitchen

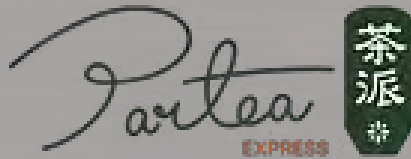


Wok frying of food
at Chang Cheng central kitchen

Many well-known brands and restaurants in Singapore already use central kitchens

Coffeeshops

Example:



Supported by central kitchen operated by:



Restaurants

Example:



Supported by central kitchen operated by:



Meet Our New Central Kitchen Operator



- Started as one small stall in 1994
- Now they have 160 food places and 30 coffeeshops
- They make both halal and non-halal food including vegetarian
- They even run the canteen at Curtin University



What Makes This SO
Much Better?





✓ **Tasty, Healthy
Food Always**

✓ **SO Many Food
Choices from the
Pre-Order Menu**

✓ **Super Fast
Service!**

Every meal will taste the same delicious way, every single day!

Way more options than we have now, something for everyone! In addition, each menu comes with the nutrition information and ingredient.

Child have to simply scan the QR code on AMI Card to collect their food!

Does the Menu fulfil the Healthy Meals in School Programme?

amibox

Healthy Meals in School Programme (HMSP)

- Our menus are designed to meet the nutritional standards set by the HMSP.
- Ensuring that each meal is balanced with the right proportions of carbohydrates, proteins, healthy fats, and fiber.
- Using Healthier Choice Symbol (HCS) labelled products (low sodium salt, low saturated fat oil)
- To further manage nutritional quality, our chefs use precise

HMSP Guideline - Example Menu



WHOLEGRAIN

SERVING SIZE: 2 Serves or more

EXAMPLES OF 1 SERVE:



100g of Cooked Mixed Rice/Pasta (20% or more wholegrain in total)



2 slices of Wholegrain Bread



100g Cooked Wholegrain Bee Hoon

*Size of bowl used is 11cm (diameter) x 4cm (height).

VEGETABLES

SERVING SIZE: 2 Heaped Dessertspoons or more

EXAMPLES OF VEGETABLES:



Leafy Vegetables (E.g. Spinach, Cai Xin, etc)



Non-leafy Vegetables (E.g. Carrot, Broccoli, etc)

Starchy vegetables are not considered as vegetable.

PROTEIN

SERVING SIZE: 2 Heaped Dessertspoons or more

EXAMPLES OF PROTEINS:



Lean Meat (e.g. Skinless Chicken or Fish)



Egg



Tofu/ Tau Kwa

Video

A Glimpse...Menu options

No.	Week 1		Week 2		Week 3		Week 4	
Halal Main Meal								
1	Fish Ball Bee Hoon Soup	\$1.80	Mixed Grain Nasi Goreng	\$1.80	Teriyaki Braised Chicken with Mixed Grain Rice	\$2.00	Teriyaki Braised Chicken with Mixed Grain Rice	\$2.00
2	Teriyaki Braised Chicken with Mixed Grain Rice	\$2.00	Teriyaki Braised Chicken with Mixed Grain Rice	\$2.00	Sweet and Sour Chicken with Mixed Grain Rice	\$2.00	Roasted Chicken with Tomato Mixed Grain Rice	\$2.20
3	Baked Satay Chicken with Mixed Grain Rice	\$2.40	Mee Soto	\$2.60	Chicken Bulgogi with Mixed Grain Rice	\$2.20	Shredded Chicken Soup with Yellow Noodle	\$2.40
4	Chicken Shakshuka with Mixed Grain Rice	\$2.40	Sweet & Sour Fish with Mixed Grain Rice	\$2.60	Black Pepper Chicken with Mixed Grain Rice	\$2.60	Spaghetti Chicken Bolognese	\$2.40
5	Spaghetti Chicken Bolognese	\$2.40	Chicken Mushroom Spaghetti	\$2.70	ABC Chicken Soup with Mixed Grain Rice	\$2.70	Chicken Rendang Rice	\$2.70
6	Japanese Curry Chicken Rice	\$2.70	Baked Chicken Tikka Rice	\$2.70	Chicken Aglio Olio Spaghetti	\$2.70	Tomato Fish with Mixed Grain Rice	\$2.70
Halal Vegetarian								
1	Mushroom and Vegetable Fried Rice	\$2.20	Sweet & Sour Bean Curd with Mixed Grain Rice	\$2.00	Beans & Vegetable stew with Mixed Grain Rice	\$2.40	Chickpea Curry with Wholemeal Bread	\$2.20
2	Tomato Penne with Roasted Vegetables	\$2.60	Veggie Scrambled Egg with Wholemeal Bread	\$2.40	Stir Fried Tomato Egg with Mixed Grain Rice	\$2.40	Japanese Curry Beancurd with Mixed Grain Rice	\$2.40
3	Assorted Seasonal Mushroom with Mixed Grain Rice	\$2.60	Vegetarian Stewed Curry Beancurd with Mixed Grain Rice	\$2.60	Vegetarian Mushroom Sauce Macaroni	\$2.60	Stir-Fried Mushroom Beancurd with Mixed Grain Rice	\$2.40
Halal Light Meal								
1	Stir Fried Wholegrain Mee Goreng	\$1.80	Stir Fried Mixed Grain Egg Fried Rice	\$1.80	Mixed Grain Chicken Porridge	\$1.80	Stir Fried Wholegrain Kway Teow	\$1.80
2	Baked Beans with Wholemeal Bread	\$2.20	Mixed Grain Peanut Porridge	\$1.80	Japanese Curry with Wholemeal Bread	\$2.20	Veggie Scrambled Egg with Wholemeal Bread	\$2.40

A Glimpse...Menu options

No.	Week 1		Week 2		Week 3		Week 4	
Non-Halal Main Meal								
1	Fried Mixed Grain Rice with Chicken	\$1.80	Egg Fried Rice with Minced Pork	\$2.20	Yang Zhou Mixed Grain Fried Rice	\$1.80	Black Pepper Chicken with Mixed Grain Rice	\$2.40
2	Braised Mushroom Chicken with Mixed Grain Rice	\$2.00	Silky Egg Mixed Grain Yellow Noodle	\$2.20	Taiwanese Braised Pork Bowl	\$2.40	Fried Rice with Sweet and Sour Pork	\$2.40
3	Hainanese Chicken Mixed Grain Rice	\$2.40	Hainanese Chicken Mixed Grain Rice	\$2.40	Hainanese Chicken Mixed Grain Rice	\$2.40	Hainanese Chicken Mixed Grain Rice	\$2.40
4	Grilled Pork Fried Rice	\$2.70	Ginger & Scallion Fish with Mixed Grain Rice	\$2.70	Braised Soya Minced Pork with Mixed Grain Rice	\$2.40	Steamed Fish with Mixed Grain Rice	\$2.60
Non-Halal Small Portioned Meal								
1	Braised Mushroom Chicken with Mixed Grain Rice	\$1.80	Silky Egg Mixed Grain Yellow Noodle	\$2.00	Taiwanese Braised Pork Bowl	\$2.20	Fried Rice with Sweet and Sour Pork	\$2.20
2	Hainanese Chicken Mixed Grain Rice	\$2.20	Hainanese Chicken Mixed Grain Rice	\$2.20	Hainanese Chicken Mixed Grain Rice	\$2.20	Hainanese Chicken Mixed Grain Rice	\$2.20
3	Grilled Pork Fried Rice	\$2.50	Ginger & Scallion Fish with Mixed Grain Rice	\$2.50	Braised Soya Minced Pork with Mixed Grain Rice	\$2.20	Steamed Fish with Mixed Grain Rice	\$2.40





➤ All parents are issued an envelope

- ✓ The AMI Card
- ✓ A flyer on AMIAPP School
- ✓ Chang Cheng key chain





➤ Have your child's AMI card on hand.

➤ Scan the below QR code to download the AMI School app on your phone.



What Happen If You Forgot to
Pre-order Your Child's Food!



Drink and Snack Vending Machine



Snack Stall: Dim Sum, Hot drinks



Orange Juice

Ijooz Vending Machine



A Glimpse...Menu options in Snack Stall

S/NO	Menu	Price
Handmade Drinks Hot/Cold		
1	Coffee	\$ 1.00
2	Tea	\$ 1.00
3	Yuan Yang	\$ 1.00
4	Milo	\$ 1.00
5	Lemon Tea	\$ 1.20
6	Soya	\$ 1.00
7	Barley	\$ 0.60

S/NO	Menu	Price
Snacks		
1	Red Bean Pau	\$ 0.90
2	Honey Chicken Pau	\$ 1.00
3	Teriyaki Chicken Pau	\$ 1.00
4	Black Pepper Chicken Pau	\$ 1.00
5	Small Chicken Pau	\$ 1.00
6	Chicken Siew Mai (1pc)	\$ 0.80
7	Lo Mai Kai	\$ 2.00
8	Steamed Corn in Cup	\$ 1.50

S/NO	Menu	Price
Packet Drinks		
1	Magnolia Low Milk (Chocolate, Vanilla, Banana, Strawberry) 200m	\$ 1.10
3	Yeo's Chrysanthemum Tea 250ml	\$ 1.00
4	Yeo's Pink Dolphine (Peach/Blackcurrant) 250ml	\$ 1.00
5	Yeo's Bandung Rose	\$ 1.00
6	Pokka Jasmine Green Tea 250ml	\$ 1.00
7	Vitagen Less Sugar 125ml	\$ 1.00
8	100plus	\$ 1.00

What happens if your child is
unwell or have an urgent
matter and cannot collect the
pre-ordered meal?



Uncollected Food

- Meals are Refundable only with Official Documents (e.g. Medical Certificate); Application to be submitted within 7 Calendar Days via AMI app
 - ✓ Click **Ami Box School Support Request** from Account
 - ✓ Fill in the Form with **attached photo** of official documents
 - ✓ Submit for CRM service staff for approval
 - ✓ Once approved, order amount will be credited back
- For foreseen uncollection, please cancel your pre-order using the AMI School app by 3pm for the next day's meal

What happens if your child
forgets to bring their AMI
Card to school?



What happens if your child forgets to bring their AMI Card to school?

- Approach the snack stall or any Chang Cheng staff in the canteen for assistance with collecting their food order.
- We believe all our students are Trustworthy and will be responsible in taking care and always have their AMI Card with them.



What happens if your child forgets to bring their AMI Card to school?

- **Recommend:**

- Provide a lanyard with card holder for your child/children. Wear it securely during school hours
- Write your child's/children's name and class on the AMI Card using a permanent marker



What happens if your child
lost the AMI Card?



What Happens if your child lost their AMI Card?

- Report the lost of AMI card via AMI app.
- A fee of \$10 will be charged for any AMI card replacement.



When Will This Happen?

Term 4 2025 (End of This Year)

- Brief all incoming P1 parents: 21 Nov, 11.30am to 12.30pm (physical) including issuance of AMI Card
- Technical assistance at school hall: 21 Nov, 12.30pm to 1.30pm (physical)
- Caterer will do some minor renovation at the frontage of the canteen stall area

Term 1 2026 (When School Reopens)

- Chang Cheng will deploy more staff to assist students in their collection of food (1st three weeks).

Booth set up by Chang Cheng



Get Ready for
Our New Canteen!



Thank you!

Central Kitchen Meal Model



Summary of List of Things For Parents To Do

1. Mandatory

- Purchase of Textbooks and Uniforms
- Application for eGIRO
- Submission of Edusave Standing Order (Only for Singapore Citizen)
- Submission of Student Detail Form
- Pairing of AMI Card with AMIAPP School app

2. Only if Required

- Application for School Bus
- Application for Digital Device
- Application for Student Care Centre
- Application for MOE-FAS or School-based FAS

THANK YOU



West View Primary School
Passionate Learners, Confident Leaders

Version: 230406 (Final)

[OFFICIAL CLOSED/NON-SENSITIVE]
Official (Closed)/Sensitive (Normal)